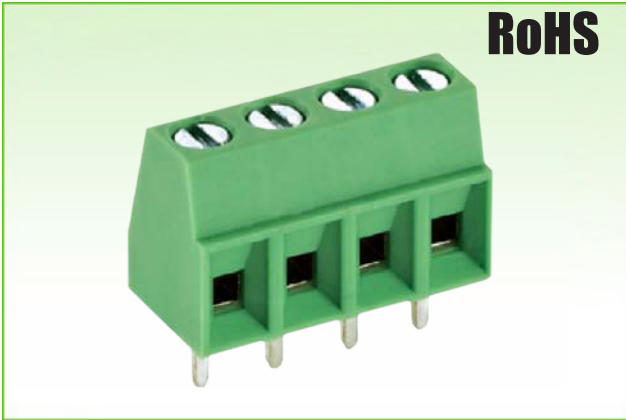


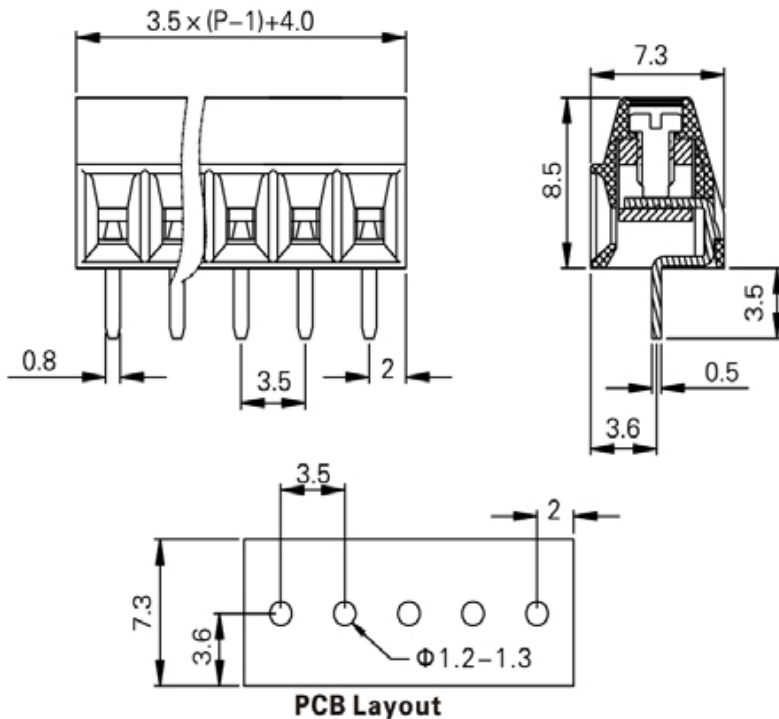


3.5mm Pitch



		
Rated Voltage	300V	130V
Rated Current	10A	10A
Insulation Withstand Voltage	1600V / Min.	
Insulation Resistance	500MΩ or more at DC500V	
Temperature Range	-40°C to +105°C	
Wire Range	26-16AWG Sol & Str	0.2mm <sup>2</sup> -1.5mm <sup>2</sup>
Screw & Torque	M2.0, 0.25Nm Max	
Strip Length	5.5mm	
Wire Orientation	180° (Wire-to-Board)	
Operating Temperature	-40°C ~ +105°C	
Soldering	Single Wave, 260°C 5 Sec Max Double Wave, 260°C 10Sec Max.	

Units: mm



- ① Housing: PA66, UL94V-0
- ② Solder Pin: Copper Alloy, Tin Plated

### Part Numbering System:

103-350V - XXP - XXX

①      ②      ③

- ① Series
- ② Number of Poles: 02, 03, 04, ..., 24
- ③ Insulator Color: GRN = Green